

GIMP Lesson 1 - Changing the color of your hair.

Step 1 -Open a picture from photo booth of **yourself only**. We are going to the salon. With this picture open, use the “**Paths**” tool to draw a path around your hair as shown below: Make sure the option “**Design**” is selected for your path tool.



Step 2 - Once you have outlined your entire hair connect the first anchor with the last one by clicking on the first to overlap them. From the Select menu at the top, click on the **Selection from Path** command. This will put the marching ants around your hair.



Step 3 - Now we are going to desaturate your hair. From the Colors menu at the top, click on **Hue-Saturation** command. Drag the Saturation bar all the way to the left to take out the color of your hair. It should look gray like the photo below.

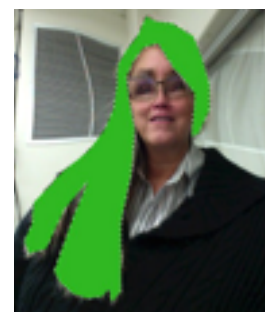


Step 4 - From the Layer menu at the top, click on the **New Layer** command and make sure **Transparency** is selected before clicking **OK**. (Make sure to leave the hair selected, do not unselect). Name your new layer “**Color**”.

Step 5 - Pick a new color for your hair by selecting a new foreground color on the toolbox.

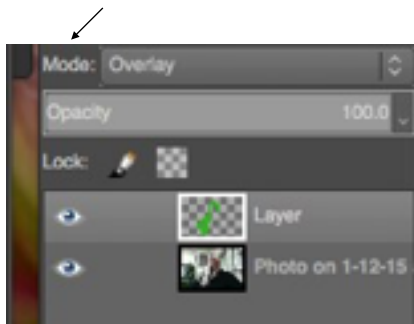


Step 6 - Fill the hair with the color using the fill bucket while still on your new layer **Color**. It should look similar to the picture on the right after you color it.



Gimp Lesson 1 - Bierscheid - 1/15/15

Step 7 - Change the mode option for your color layer to **Overlay**. The mode option is found on your layers panel as shown below. Your hair will now blend with the color as shown below also.



Step 8 - You can blur this layer to blend it even more by going to the Filters menu at the top and clicking on the **Blur** command and the **Gaussian Blur** command after that.

Step 9 - You have now completed your hair appointment. Save your work by going to the File menu at the top and selecting **Save**. Save it as your **last name Gimp1**.

Step 10 - Now export your file by going to the File menu at the top and clicking on **Export As** command. At the bottom of the window click on **File Type** as and select the option for **PNG Image**. Save the file as your **last name Gimp1** and leave the extension .PNG at the end of the name. Drop this file into the lass folder when completed.